

BACK TO SCHOOL PROCEDURES

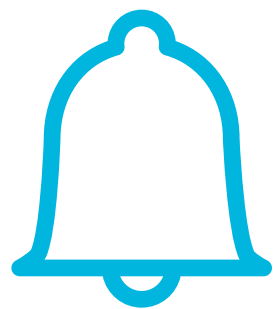


SCHOOL ARRIVAL

Students can come in the building through the grade level hallway doors at 7:30 a.m. or after. Students should not wait outside once the doors have opened. There is no adult supervision outside prior to 7:30 am. When students enter the building, they will be directed to sit in a designated, socially distanced spot. Breakfast begins at 7:30 am. Students wishing to eat breakfast should enter the Breakfast Door that is located between the 6th and 7th grade hallways.

STUDENT DISMISSAL

At the end of the school day, all students must exit the building and leave campus by 3:40 p.m. Students safety is a priority so please ensure that your child either walks home or is picked up in a timely manner.



TRANSPORTATION

There are students who depend on KISD buses for transportation to and from school. Please be mindful that buses may run late the first few days due to new routes, new students and new cleaning protocols.

MASKS

Masks are required to be worn at school. Students should bring a mask from home and plan to wear it throughout the day.



BACKPACKS & LOCKERS

Students will be allowed to carry a backpack since they do not have an assigned a locker at this time.

STUDENT IDS

Beginning on the first day of school, ID photos will be taken through elective classes. We intend for all in-person students to have their ID's by the end of the first week.



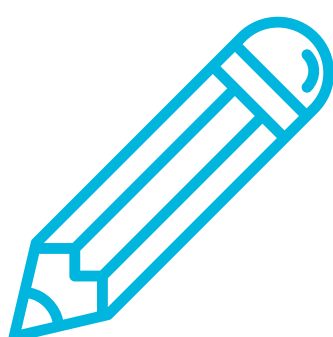


TECHNOLOGY

Students are encouraged to bring their borrowed KISD device (either iPad or laptop) or personal device they have been using to complete assignments at home. Devices may be used for classroom instruction.

SCHOOL SUPPLIES

School supplies will be distributed as students have their ID photos taken. All students should receive their school supplies by the end of the first week.

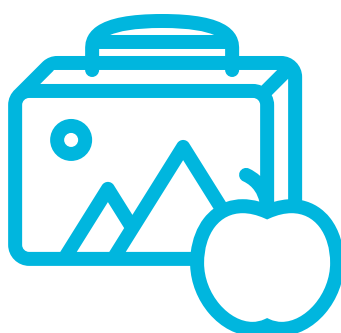


TEXTBOOKS

Most textbooks are consumable or may be found online. If there is a hard cover textbook that parents would like to request, please reach out to our librarian, Mrs. Fay.

LUNCH

Each grade level has a designated lunch period. Students will enter the cafeteria and go through the line to get a lunch. Students will then be seated at the cafeteria tables. During both the lining up and the eating, students will be socially distanced as much as possible.

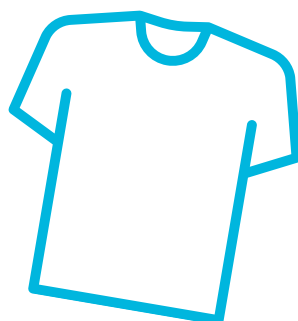


WATERBOTTLES

Students are encouraged to bring their own water bottle. The water fountains will be available for students to refill their water bottles throughout the day.

DRESS CODE

Please be sure to take a look at the KISD Student Code of Conduct to make sure that your child is dress code compliant when they arrive at school.



LET'S MAKE IT A GREAT YEAR, LIONS!